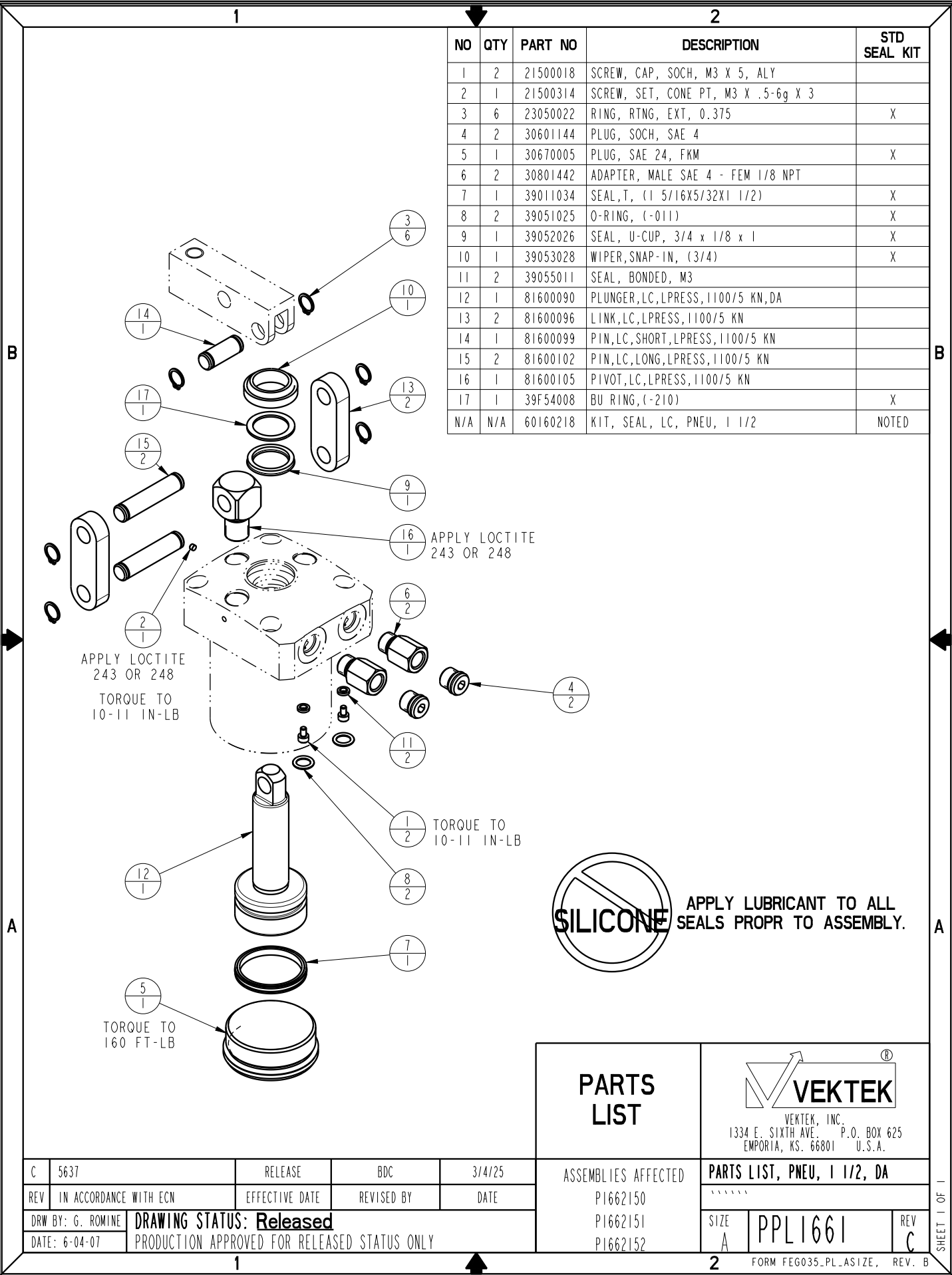



| NO | QTY | PART NO | DESCRIPTION | STD SEAL KIT |
|-----|-----|----------|-------------------------------------|--------------|
| 1 | 2 | 21500018 | SCREW, CAP, SOCH, M3 X 5, ALY | |
| 2 | 1 | 21500314 | SCREW, SET, CONE PT, M3 X .5-6g X 3 | |
| 3 | 6 | 23050022 | RING, RTNG, EXT, 0.375 | X |
| 4 | 2 | 30601144 | PLUG, SOCH, SAE 4 | |
| 5 | 1 | 30670005 | PLUG, SAE 24, FKM | X |
| 6 | 2 | 30801442 | ADAPTER, MALE SAE 4 - FEM 1/8 NPT | |
| 7 | 1 | 39011034 | SEAL, T, (1 5/16X5/32X1 1/2) | X |
| 8 | 2 | 39051025 | O-RING, (-011) | X |
| 9 | 1 | 39052026 | SEAL, U-CUP, 3/4 x 1/8 x 1 | X |
| 10 | 1 | 39053028 | WIPER, SNAP-IN, (3/4) | X |
| 11 | 2 | 39055011 | SEAL, BONDED, M3 | |
| 12 | 1 | 81600090 | PLUNGER, LC, LPRESS, 1100/5 KN, DA | |
| 13 | 2 | 81600096 | LINK, LC, LPRESS, 1100/5 KN | |
| 14 | 1 | 81600099 | PIN, LC, SHORT, LPRESS, 1100/5 KN | |
| 15 | 2 | 81600102 | PIN, LC, LONG, LPRESS, 1100/5 KN | |
| 16 | 1 | 81600105 | PIVOT, LC, LPRESS, 1100/5 KN | |
| 17 | 1 | 39F54008 | BU RING, (-210) | X |
| N/A | N/A | 60160218 | KIT, SEAL, LC, PNEU, 1 1/2 | NOTED |



| | |
|-------------------|--|
| PARTS LIST |  VEKTEK VEKTEK, INC. 1334 E. SIXTH AVE. P.O. BOX 625 EMPORIA, KS. 66801 U.S.A. |
| | PARTS LIST, PNEU, 1 1/2, DA |
| | ASSEMBLIES AFFECTED P1662150 P1662151 P1662152 |
| SIZE A | PPL1661 |
| | REV C |

| | | | | |
|---------|------------------------|--|------------|--------|
| C | 5637 | RELEASE | BDC | 3/4/25 |
| REV | IN ACCORDANCE WITH ECN | EFFECTIVE DATE | REVISED BY | DATE |
| DRW BY: | G. ROMINE | DRAWING STATUS: Released | | |
| DATE: | 6-04-07 | PRODUCTION APPROVED FOR RELEASED STATUS ONLY | | |